



SUBMITTAL SHEET

LB Series Convection Draft Barrier Heaters
376 to 5000 Watts
120, 208/240, 277 Volts



DATE: _____

JOB NAME: _____

LOCATION: _____

ARCHITECT: _____

ENGINEER: _____

CONTRACTOR: _____

SUBMITTED BY: _____

SELECTION

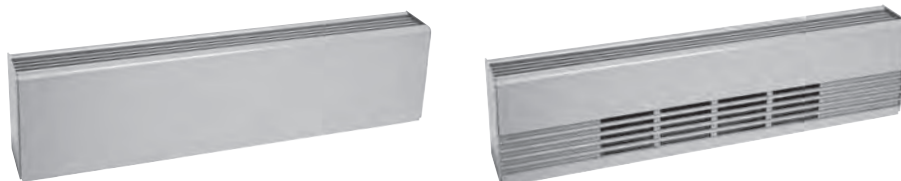
ITEM	QTY	CATALOG NUMBER	TAG	WATTS	VOLTS	PHASE ϕ	AMPS	AVAILABLE CONTROLS

ACCESSORIES AND CONTROLS

ITEM	QTY	CATALOG NUMBER	TAG	DESCRIPTION



Draft Barriers LB Series



Model Code:

LB	F	2	24	03
A	B	C	D	E

A: Series
 B: Optional front intake
 C: Length
 D: Volts: 12=120V 20=208V
 24=240V 27=277V
 E: Watts (376 - 5000)

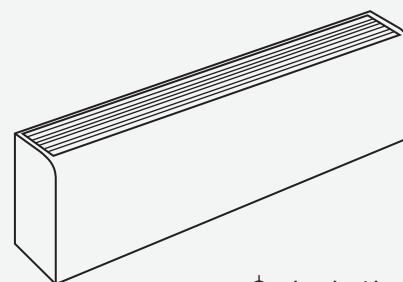
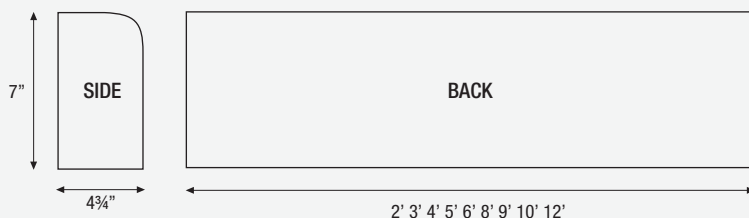
- Full length thermal limit switch
- 14 gauge front and back
- Two piece all aluminum
- Convection Heat
- Quiet Running
- Extended backs and fronts available
- 4" junctionboxes at each end
- 3/4" EMT raceway standard
- 5" W x 7" H cabinet size
- Available in grey, almond, bronze, white, & black
- Multiple heater sections on common back
- Custom cabinet lengths, 2-12 feet in 1/16" increments
- 1/2" and 3/4" knockouts



The LB Series Draft Barrier

This draft heater is used for tall glass walls or complete heating of large commercial spaces. The sleek lines complement any commercial building. Feed-through wireways help provide continuous wall-to-wall warmth. Controls can be conveniently mounted in either end of the heater or in a separate section. Heated sections can be anywhere within the case. End caps are required on stand alone installation. Optional colors include white and gray. Custom paint colors are available. Optional anodized finishes can match window finishes. Suitable for industrial, commercial or residential uses.

Dimensional Data



⊕ =knockout location

Engineering Specifications

- Model LB Architectural Draft Barriers shall be 7" H and 5" W. The front cover shall be 12 gauge extruded aluminum construction suitable for architectural, commercial and industrial use with 1/4" pencil-proof intake and discharge grilles. The one-piece cover shall be extruded for maximum strength and available in lengths up to 12 feet.
- The cover shall be linear mount to the 12 gauge heater back with no visible fasteners. The 12 gauge heater back shall be suitable for mullion-to-mullion mounting.
- Standard painted finishes or optional anodizing shall be provided as specified by the architect. Color matching to architect's specifications are available as optional finishes.
- Heat sections from 2 -10 feet are available. All heaters shall contain 3/4" EMT built-in raceway with factory wiring to provide field wiring from either end when optional controls are not included.
- 1/2" and 3/4" knockouts shall be provided in the side and rear of the heater junctionbox to permit end-to-end wiring. All blank sections shall be fully enclosed to allow branch circuit wiring.
- All heaters shall contain a full length thermal overheat protector with automatic reset. Wattages shall be available from 100 to 500 Watts per foot. Heating elements shall be tubular stainless steel or aluminum tubing with aluminum fins mechanically bonded to ensure efficient heat transfer.
- Element fin temperature shall not exceed 350°F to ensure long element life. Elements shall be center anchored and free-floating in nylon bushings at each end.
- Control sections include 6" or 12" with disconnect, thermostat, pneumatic relay, transformer relay, relay, fused disconnect or duplex receptacle. Standard built-in heater controls shall include thermostats (single and double pole) and disconnect switches.
- Built-in controls shall be tamperproof and shall be adjustable with a blade screwdriver through the discharge louver.
- All heaters are Underwriters Laboratories listed.
- Tested under UL Safety Standard UL#1042.





Draft Barriers LB Series

Ordering Information

*Also available in 120V, 208V, and 277 Volts

STANDARD MODEL	UPC	FRONT INTAKE MODEL	UPC	VOLTS	WATTS	LENGTH	NOMINAL WATTS / FT.
LB22403	14300	LBF22403	14364	240	376	2'	188
LB22405	14302	LBF22405	14366	240	500	2'	250
LB22407	14304	LBF22407	14368	240	750	2'	350
LB22410	14306	LBF22410	14370	240	1000	2'	500
LB32405	14308	LBF32405	14372	240	564	3'	188
LB32407	14310	LBF32407	14374	240	750	3'	250
LB32411	14312	LBF32411	14376	240	1125	3'	350
LB32415	14314	LBF32415	14378	240	1500	3'	500
LB42407	14316	LBF42407	14380	240	750	4'	188
LB42410	14318	LBF42410	14382	240	1000	4'	250
LB42415	14320	LBF42415	14384	240	1500	4'	350
LB42420	14322	LBF42420	14386	240	2000	4'	500
LB52409	14324	LBF52409	14388	240	940	5'	188
LB52412	14326	LBF52412	14390	240	1250	5'	250
LB52418	14328	LBF52418	14392	240	1875	5'	350
LB52425	14330	LBF52425	14394	240	2500	5'	500
LB62411	14332	LBF62411	14396	240	1125	6'	188
LB62415	14334	LBF62415	14398	240	1500	6'	250
LB62422	14336	LBF62422	14400	240	2250	6'	350
LB62430	14338	LBF62430	14402	240	3000	6'	500
LB82415	14340	LBF82415	14404	240	1500	8'	188
LB82420	14342	LBF82420	14406	240	2000	8'	250
LB82430	14344	LBF82430	14408	240	3000	8'	350
LB82440	14346	LBF82440	14410	240	4000	8'	500
LB92416	14348	LBF92416	14412	240	1692	9'	188
LB92422	14350	LBF92422	14414	240	2250	9'	250
LB92433	14352	LBF92433	14416	240	3375	9'	350
LB92455	14354	LBF92445	14418	240	4500	9'	500
LB102418	14356	LBF102418	14420	240	1875	10'	188
LB102425	14358	LBF102425	14422	240	2500	10'	250
LB102437	14360	LBF102437	14424	240	3750	10'	350
LB102450	14362	LBF102450	14426	240	5000	10'	500



Draft Barriers LB Series

Accessories

MODEL	DESCRIPTION
LB-100BS	1FT. Blank Section
LB-200BS	2FT. Blank Section
LB-300BS	3FT. Blank Section
LB-400BS	4FT. Blank Section
LB-500BS	5FT. Blank Section
LB-600BS	6FT. Blank Section
LB-700BS	7FT. Blank Section
LB-800BS	8FT. Blank Section
LB-900BS	9FT. Blank Section
LB1000BS	10FT. Blank Section

Options

MODEL	DESCRIPTION
LB-IC	Inside Corner
LB-OC	Outside Corner
LB-EC	REQUIRED End Cap (Specify right or left) 1/2"
LB-SP	Splice Plate
LB-WT	Wall Trim
LB-MESH	1/4" Wire mesh under discharge grill
LB-PD-FM	Pedestals (field mounting)

Control Sections

MODEL	DESCRIPTION
LBCS-R	Relay Section - SPST, 20 Amp, 277 Volt
LBCS-RDS	Relay, Disconnect Switch Section, 20 Amp
LBCS-TR	Xformer Relay Section - SPST, 25 Amp, 277 V, 24V Control
LBCS-TRDS	Transformer Relay, Disconnect Switch Section, 20 Amp
LBCS-PE	PE Relay, SPST, 20 Amp
LBCS-DS-FUSED	Disconnect Switch, with 20 Amp fuse and fuse block

Integral Controls

MODEL	DESCRIPTION
ITS	Integral Stat 25 Amp, SPST-120-277 Volts - STD-LF or RT
ITD	Integral Stat 20 Amp, DPST-208-240 Volts - STD-LF or RT
IDS	Integral Disconnect Switch 20 Amp, 120-277 V - STD-RT side
LBCS-TS	Thermostat Section - SPST, 20 Amp, 277 Volts
LBCS-TSDS	Thermostat Disconnect Switch Section, 20 Amp
LBCS-TSR	Thermostat Relay Switch, 20 Amp
LBCS-TSDSR	Thermostat Disconnect Switch, Relay Section, 20 Amp
LBCS-DS	Disconnect Switch, Section, 20 Amp

