

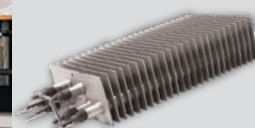
# Compact Unit Heater KBP Series



**Model Code:**

KBP	24	06
A	B	C

A: Series  
 B: 12 - 120V 24 - 240V  
 20 - 208V 27 - 277V  
 C: Watts (950 to 6000)



**Pic-A-Watt**  
Steel Fin Element



- Pic-A-Watt® element
- Multiple wattage selection
- Long life cast iron motor
- Aluminum fan blade
- High accuracy built-in thermostat
- Powder-coated, textured finish
- Fan delay
- Patented Smart Limit Protection®
- Universal (wall/ceiling) mounting bracket
- Selector switch—fan/heat/off
- 5-year limited warranty
- Standard color: almond



## Multiple Wattage Unit Heater

The KBP is the industry standard for multi-wattage garage / shop heaters. Designed for rugged performance, the flow-through design efficiently moves air by pulling air from the back of the heater and discharges it out the front, easily heating a large space. With high quality components suitable for both residential and commercial applications, it comes standard with a 3-position switch and an accurate built-in thermostat. The integral fan delay continues to dissipate heat from the elements during the cool down period, maximizing the heat exchange in the room. King's exclusive dual Pic-A-Watt steel fin elements allow customers to select from a range of wattage options, tailoring the heater to an area's specific heating requirements.

### Ordering Information

MODEL	UPC	VOLTS	PHASE	WATTAGE	AMPS	WEIGHT (lbs.)
KBP1230	15191	120	1	2850•1900•950	24	26
KBP2406*	15190	240/208*	1	5700•4750•3800•2850•1900•950	24/27	24
KBP2006-3MP**	15193	208*	1-3	5700•2850	27	26
KBP2406-3MP**	15188	240/208*	1-3	5700•2850	24/27	25
KBP2704	15187	277	1	4000•3000•2000•1000	15	26
KBP4804-3MP**	15196	480***	1-3	4160	9/5	26
KBP4806-3MP**	15197	480***	1-3	6000	13/8	26

\*Approved for 208V operation. Heater will draw 13% less Amps and 25% less wattage \*\*3-Phase units do not have Heat / Fan / Off \*\*\*480 Volt models are 24 Volt control  
 Minimum clearance from combustibles: 18" from front, 2" from top, 6" from sides and 5" from rear. Minimum clearance 6' from floor.

### Engineering Specifications

*Contractor shall supply and install KBP Series unit heaters manufactured by King Electrical Mfg. Company. Heaters shall be of the wattage and voltage as indicated on the plans.*

**Pic-A-Watt Heating Element:** Exclusive King multi-tap element allows field adjustment to several wattages at time of installation. Steel sheath elements of various resistance are copper brazed to steel plate fins producing a multi-wattage heating element.

**Built-in Thermostat:** Single pole factory installed hydraulic capillary tube thermostat for precision heating control. Operating range 40° to 90° F.

**Fan/Heat/Off Switch:** 3-position switch provides heating and summer fan only operation.

**Fan Delay Switch:** The fan continues to operate after the thermostat shuts off in order to remove the residual heat left in the elements. Power must not be interrupted.

**CFM:** 270

**Universal Mounting Bracket:** Combination ceiling/wall bracket is included with every heater.

**Unit Bearing Motor:** Permanently lubricated, long life, unit bearing 4-Pole motor with 20 cc of oil. Enclosed rotor provides long-lasting, trouble-free operation. Thermally protected. 1300 RPM.

**Electrically Held Smart Limit Protection:** Heater shuts off when an over temperature condition exists and automatically resets when the normal operating temperature returns.

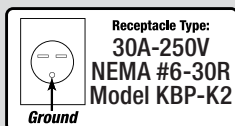
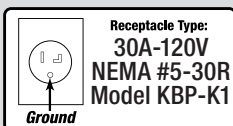
**Tested:** UL 2021

**Approval:** cCSAus

## Accessories

MODEL	UPC	PHASE	WEIGHT (lbs.)
KBP-K1	15198	6 ft. cord/handle kit - 120V, 1-Phase, 30 Amp (Receptacle not included. See below)	2
KBP-K2	15199	6 ft. cord/handle kit - 240V, 1-Phase, 30 Amp (Receptacle included. See below)	2
KBP-RT	N/A	Provision for remote thermostat (line voltage)	N/A
*KBP-RTL1V1	N/A	Provision for remote thermostat - 1-Phase (24V)	N/A
*KBP-RTL1V3	N/A	Provision for remote thermostat - 3-Phase (24V)	N/A

\*Factory installed only - Heat/Fan/Off activated at unit only - can not operate remotely



## Dimensional Data

