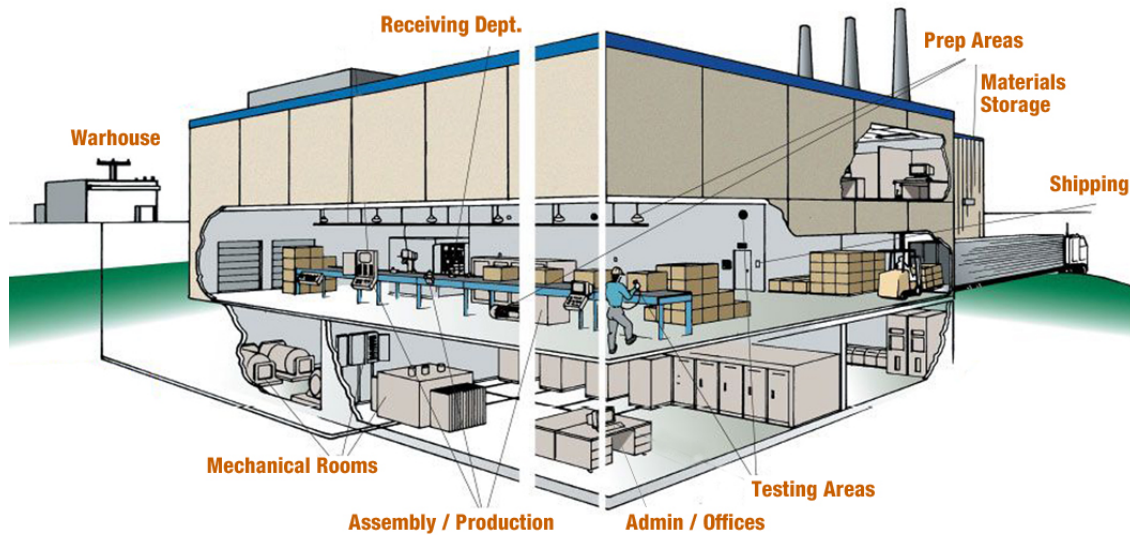




Addressing Various Heating Demands of Industrial Facilities With Electric Heat



Manufacturing/Industrial Plants usually consist of buildings and machinery, or more commonly a complex having several buildings, where workers manufacture goods or operate machines processing one product into another. Whatever the combination, each area has specific heating requirements and there is an electric heating solution that is right for the job.

These buildings often present unique heating challenges that vary from room to room, requiring different heating solutions optimized for the specific application to ensure energy efficiency and maximum comfort.

Below is a list of common areas in a manufacturing/industrial plants that can benefit from electric heaters, customized to address specific needs:

Always discuss with your HVAC specialist or installer to calculate a specific area's heat loss requirements and to recommend the appropriate sized heater for your space.

Choosing The Right King Electric Heater For Various Areas In Manufacturing/Industrial Plants



MAKE UP AIR HANDLER

TEMPERING OUTDOOR AIR

Designed to “make up” the air in interior spaces that has been removed due to process exhaust fans. Pulls in fresh, tempered air from outside your building to replace existing air that cannot be recirculated.

VENTILATING SPACES

Use where environmental conditions warrant a greater need for ventilation not only to improve the quality of air within the building, but also protect the health of those inside.



PORTABLE INDUSTRIAL

LOADING DOCKS

Dock doors are constantly opening and closing and heat loss is unavoidable. Warm cargo and employees during active loading/unloading.

WAREHOUSES

Can be ducted to direct the heated air to required areas.

TEMPORARY EVENTS

Designed for use as primary or supplemental heat sources in large or exposed areas.



EXPLOSION-PROOF

HAZARDOUS AREAS

Ideal for areas where a potential for explosion gases, vapors in the atmosphere. For indoor dry industrial applications, oil refineries, petrochemical plants, pulp and paper mills, grain elevators, hazardous waste storage facilities, wastewater treatment plants, etc



PORTABLE UNIT HEATER

DRY OUT

Used for drying dampened or water damaged areas after water has seeped in.

CONSTRUCTION SITES

Perfect for temporary heating of spaces under construction.

LOADING DOCKS

Dock doors are constantly opening and closing and heat loss is unavoidable. Warm cargo and employees during active loading/unloading.



INDUSTRIAL FANS

VENTILATION

Use where environmental conditions warrant a greater need for ventilation.

TEMPORARY EXHAUST

Can be used to temporarily exhaust contaminated, noxious or hot air away from workers and/or machinery.

DRY OUT

Used for drying dampened or water damaged areas after water has seeped in.

HIGH TRAFFIC AREAS

Large commercial wall heaters can create a pleasant transition between indoors and outdoors by providing heat inside vestibules and other entrances.

LARGE OPEN AREAS



COMMERCIAL WALL

HIGH TRAFFIC AREAS

Large commercial wall heaters can create a pleasant transition between indoors and outdoors by providing heat inside vestibules and other entrances.

LARGE OPEN AREAS

Large lobbies and waiting rooms can be a challenge to keep warm.

STAIRWELLS

Stairwells are a prime target for supplemental heating in any multi-use space.



CABINET HEATERS

HIGH TRAFFIC AREAS

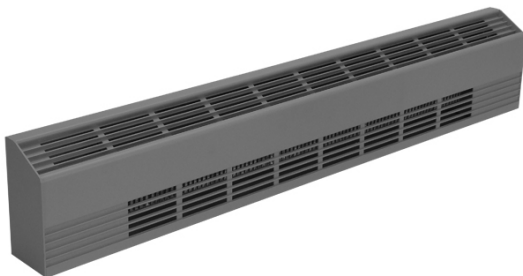
Large commercial wall heaters can create a pleasant transition between indoors and outdoors by providing heat inside vestibules and other entrances.

LARGE OPEN AREAS

Large lobbies and waiting rooms can be a challenge to keep warm.

STAIRWELLS

Stairwells are a prime target for supplemental heating in any multi-use space.



DRAFT BARRIERS

DRAFTY WINDOWS

Windows are a major source of heat loss and are prone to chilly drafts or condensation that obstructs views. Ideal for protection from cold air and condensation.

CONFERENCE ROOMS

Conference rooms and office spaces are susceptible to uncomfortable temperature changes and chilly drafts but require quiet heating solutions to avoid disruption.

OFFICES

Ideal for offices where comfort is required and noise is a major concern.



COVE HEATERS

DRAFTY WINDOWS

Windows are a major source of heat loss and are prone to chilly drafts or condensation that obstructs views. Ideal for protection from cold air and condensation.

LARGE OPEN AREAS

Large lobbies and waiting rooms can be a challenge to keep warm.



CEILING HEATERS

LARGE OPEN AREAS

Large lobbies and waiting rooms can be a challenge to keep warm.

BREAK ROOMS

To help keep smaller kitchens comfortable, look for solutions that deliver maximum output in a compact frame.

BATHROOMS

Another room with a limited floor space, where wall and floor space are already utilized by plumbing and fixtures.



FAN HEATERS

OFFICES

Ideal for offices where comfort is required and noise is a major concern.

ENTRYWAYS

Wall heaters can create a pleasant transition between indoors and outdoors by providing heat inside vestibules and other entrances.



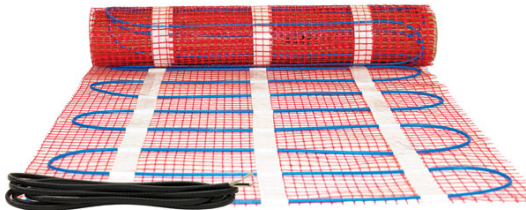
KICKSPACE HEATER

BATHROOMS

Specifically designed to fit into bathroom cabinets, saving valuable floor and wall space.

BREAK ROOMS

To help keep smaller kitchens comfortable, look for solutions that deliver maximum output in a compact frame.



FLOOR HEAT

BATHROOMS

Another room with a limited floor space, where wall and floor space are already utilized by plumbing and fixtures.

BREAK ROOMS

To help keep smaller kitchens comfortable, look for solutions that deliver maximum output in a compact frame.



UNIT HEATERS

LOADING DOCKS

Dock doors are constantly opening and closing and heat loss is unavoidable. Warm cargo and employees during active loading/unloading.

STAIRWELLS

Stairwells are a prime target for supplemental heating in any multi-use space.

PARKING GARAGES

Designed for use as primary or supplemental heat sources in large or exposed areas.

LOADING DOCKS

Dock doors are constantly opening and closing and heat loss is unavoidable. Warm cargo and employees during active loading/unloading.

WAREHOUSE & SHIPPING

Spot heaters make cooler common areas more comfortable and keep employees productive.



RADIANT HEATERS

LOADING DOCKS

Dock doors are constantly opening and closing and heat loss is unavoidable. Warm cargo and employees during active loading/unloading.

WAREHOUSE & SHIPPING

Spot heaters make cooler common areas more comfortable and keep employees productive.

BALCONY & PATIO

Tenants will appreciate the extended usefulness of balcony areas during the shoulder season.



PLENUM HEATERS

MACHINE ROOMS

Elevator shafts, water lines, wiring, and other equipment are vulnerable to freezing when the temperature drops outside.

PLENUM SPACES

Ideal for concealed areas of buildings such as an area between a finished ceiling and drop ceiling, in an open plenum or in a ducted system.



PUMPHOUSE HEATER

MACHINE ROOMS

Elevator shafts, water lines, wiring, and other equipment are vulnerable to freezing when the temperature drops outside.

PUMP ROOMS

Designed to reduce moisture from mechanical equipment and keep pumps, valves, and farm machinery from freezing.



Roof & Gutter Cable

ROOF SNOW MELT

Self-Regulating Heating Cable prevents Ice Damns from forming on roofs & in gutters.

GUTTER DE-ICING

Automatically adjusts heat output based on surface temperature and suitable for metallic and non-Metallic Gutters & Downspouts



ROOF DRAINS

ROOF DRAINS

For use with SR Self-Regulating De-Icing Roof & Gutter Heating Cable to keep drains clear all winter long. Easy install without anchoring through the roof membrane.

AC DRAINS

Condensate drain line are exposed to freezing temperatures and winter weather, which could cause the line to freeze up and become blocked.



Copyright © 2019| King Electrical Mfg. Co., All rights reserved.
Addressing Various Heating Demands of Industrial Facilities With Electric Heat

Our mailing address is:
9131 10th Avenue South, Seattle, WA 98108
www.king-electric.com