

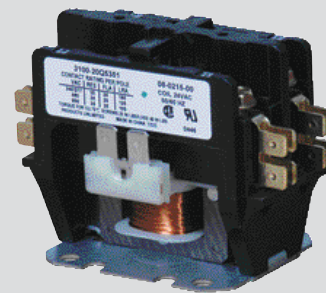
## ACCESSORIES

### MAGNETIC CONTACTORS:

- Standard in all duct heaters
- Used for primary or back-up control
- UL approved for 250,000 cycle operation

### ELECTRONIC STEP CONTROLLER:

- Provides electronic sequencing control of an electric duct heater up to 12 steps
- When interruption of power occurs, all the stages will recycle to off. Upon the restoration of power, reenergize the switches in a stepping sequence in a stepping sequence
- Commonly used with a 2–10 vDC from a stand alone T-stat, 2-10 vDC from a DDC building automation system and 4-20 ma from a building automation system; check with the factory for availability
- Not available on DHB & DB Series or bottom mount heaters



**2 Pole Magnetic Contactor**



**3 Pole Magnetic Contactor**



**Electronic Step Controller**

# Electric Duct Heaters DHB/DHC/E Series

## AIR FLOW SWITCH:

- Prevents heater from being energized when the fan is not on
- UL required
- Non adjustable airflow switch (shown) requires a minimum of 0.7" WC pressure
- Adjustable airflow switch available with rating of .05" + .02 WC to 12" WC

## POWER FUSING:

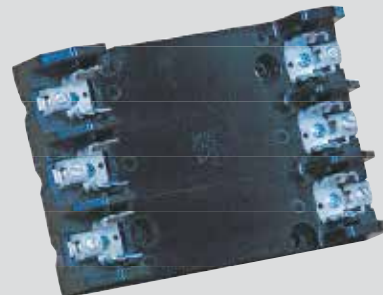
- UL standards and NEC code required for heaters drawing more than 48 AMPS
- Accessory fusing is available on heaters drawing less than 48 AMPS when requested

## CONTROL TRANSFORMER:

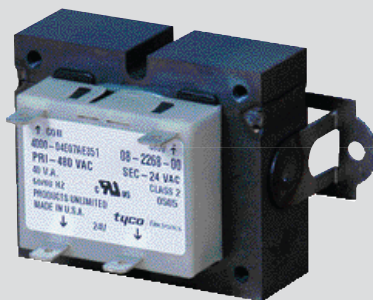
- Utilized when control voltage differs from line voltage
- Primary over current protection
- Class 1 units must have primary side protection by fusing
- Class 2 units have internal protection and do not require additional fusing unless specified



Air Flow Switch



Fuse Block



Control Transformer



Power Fusing

## ACCESSORIES (cont.)

### TERMINAL BLOCKS:

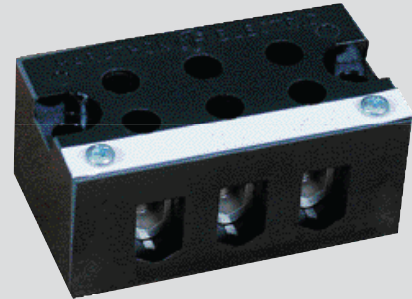
- High voltage terminal blocks are sized for copper conductors only
- Sized to accept up to: (1) 500 MCM line feeder per pole.  
Heaters requiring feeders greater than 500 MCM will be supplied with main power terminal blocks which will accept (2) parallel feeders up to 500 MCM each per pole
- Low voltage control circuit terminal boards are included for ease of field connection

### TIME DELAY RELAY:

- Relays provide a time delay of 30 to 60 seconds when energizing or de-energizing the circuit controlled
- Standard control voltages of 24 through 277

### PILOT LIGHTS:

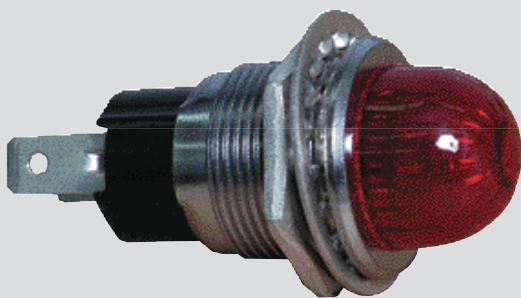
- Side panel installation for indicating the following heater conditions:
  - Heater energized
  - Step energized
  - Air flow switch open
- Pilot light control voltages must be 24 or 120 volts



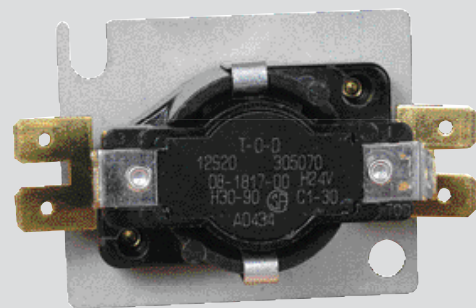
Terminal Blocks



Terminal Blocks



Pilot Light



Timed Delay Relay

# Electric Duct Heaters DHB/DHC/E Series

## **PRESSURE ELECTRIC SWITCHES:**

- Provide an interlock when basic control system is pneumatic
- Wired to close on pressure rise
- Not factory set. Will require field adjustments to specific job requirements

## **DISCONNECT SWITCHES:**

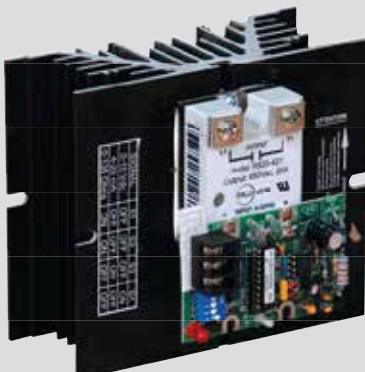
- Available unfused door interlocking disconnect switch (max. 384 AMPS)
- Not available on bottom mount heaters

## **S.S.R.:**

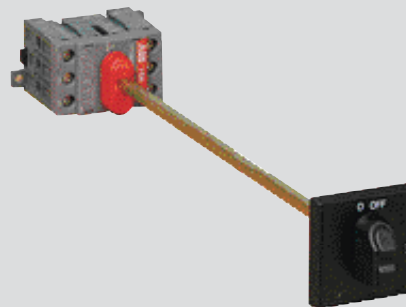
- Solid state relays (S.S.Rs.) provide the finest in electric duct heater control
- 100% solid state stepless modulation
- Noiseless
- Power and heat output precision
- Not available on DHB & DB series or bottom mount heaters



**PE Switch**



**S.S.R.**



**Disconnect Switch**