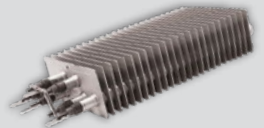


Compact Ruggedized Unit Heater KBP-RCS Series



Model Code:

KBP	24	06	-RCS
A	B	C	D
A: Series			
B: 12 - 120V 24 - 240V			
20 - 208V 27 - 277V			
48 - 480V			
C: Watts (950 to 6000)			
D: Rugged Cold Start			



Pic-A-Watt
Steel Fin Element



With U.S. & Global Materials

- Designed to operate down to -40°F
- 24VAC motor preheat circuit with indicator light, that operates when ambient is below 32°F
- Vibration Tested: tested to MIL-STD-810, 514 vibration standard
- Shock Tested: tested to MIL-STD-810, 516 shock standard
- 24-Volt control voltage
- Includes provision for 24V remote thermostat
- Low-profile mounting bracket with vibration isolation hardware
- Original selectable wattage Pic-A-Watt® elements
- Patented Smart Limit Protection®
- Multiple wattage options, to tailor to a room's specific heating requirements
- Selector Switch: Heat/Off-Disconnect
- Long life cast iron motor
- Fan delay to dissipate heat
- 2-Year Limited Warranty

Designed To Start In Sub-Freezing Temperatures Down To -40°F. The KBP-RCS is a ruggedized compact unit heater, engineered for extreme cold environments and designed to operate in sub-freezing temperatures down to -40°F. Electric Motors are difficult to start in frigid temperatures, so the King cold start heater is designed with a 24VAC heater that warms the motor before the main heating circuit and fan turns on. This 24VAC preheat circuit engages when the ambient temperature is below 32°F degrees and warms up the fan motor so that it starts and runs properly. KBP-RCS also includes heavy-duty, vibration and shock-resistant construction, tested to MIL-STD-810 standards, to ensure reliable and consistent heat output in extreme conditions. The low-profile mounting bracket includes vibration isolation hardware, making it suitable for various industrial and commercial applications, ensuring warmth and safety in frigid temperatures. The flow-through design efficiently moves air by pulling air from the back of the heater and discharges it out the front, easily heating a large space. Includes a provision to connect any 24V remote thermostat operation and an integral fan delay to dissipate heat from the elements during the cool down period, maximizing the heat exchange in the room. King's exclusive dual Pic-A-Watt steel fin elements allow customers to select from a range of wattage options, tailoring the heater to an area's specific heating requirements.

Ordering Information

MODEL	UPC	WATTS	BTUH (000)	PHASE	VOLTS	AMPS	CFM	TEMP. RISE	AIR THROW	MAX MOUNT HEIGHT	WT. (lbs.)
KBP2006-RCS	00000	5700-4750-3800-2850-1900-950	19,454 - 3,242	1	208	27.4 - 4.6	385	67°F-11°F	12 ft.	8 ft.	26
KBP2406-RCS	00000	5700-4750-3800-2850-1900-950	19,454 - 3,242	1	240/208*	23.8 - 4	385	67°F-11°F	12 ft.	8 ft.	24
KBP2006-3-RCS	00000	5700-2850	19,454 - 9,727	3	208	15.8 - 7.9	385	67°F-34°F	12 ft.	8 ft.	26
KBP2406-3-RCS	00000	5700-2850	19,454 - 9,727	3	240/208*	13.7 - 6.9	385	67°F-34°F	12 ft.	8 ft.	25
KBP4806-3-RCS	00000	6000	20,478	3	480	7.2	385	71°F	12 ft.	8 ft.	26

*Approved for 208V operation. Heater will draw 13% less Amps and 25% less wattage
Minimum clearance from combustibles: 18" from front, 2" from top, 6" from sides and 5" from rear. Minimum clearance 6' from floor.

TEMPERATURE RISE PER WATTAGE CHART

WATTS	BTUH	CFM	TEMP. RISE	WATTS	BTUH	CFM	TEMP. RISE
950	3,242	385	8	3800	12,969	385	31
1000	3,413	385	8	4000	13,652	385	33
1900	6,485	385	16	4160	14,198	385	34
2000	6,826	385	16	4750	16,212	385	39
2850	9,727	385	23	5700	19,454	385	47
3000	10,239	385	25	6000	20,478	385	49

Compact Unit Heater KBP-RCS Series

Engineering Specifications

Contractor shall supply and install KBP-RCS Series unit heaters manufactured by King Electrical Mfg. Company. Heaters shall be of the wattage and voltage as indicated on the plans.

Vibration & Shock-Resistant Construction: Tested to MIL-STD-810 standards, to ensure reliable and consistent heat output in extreme conditions. Includes low-profile mounting bracket with vibration isolation hardware. Tested to MIL-STD-810, 514 Vibration Standard. Tested to MIL-STD-810, 516 Shock Standard

Pic-A-Watt Heating Element: Exclusive King multi-tap element allows field adjustment to several wattages at time of installation. Steel sheath elements of various resistance are copper brazed to steel plate fins producing a multi-wattage heating element.

Pre-Heat Circuit: Includes a 24VAC heater that warms the motor before the main heating circuit and fan turns on. This 24VAC preheat circuit engages when the ambient temperature is below 32°F degrees and warms up the fan motor so that it starts and runs properly.

Control Voltage: 24VAC

Provision For 24V Remote Thermostat: Includes terminals to connect an optional 24V Thermostat. Compatible with NEST / any 24V WIFI Stat

Heat/Off-Disconnect Switch: 3-position switch provides heating, summer fan only operation, and DP Disconnect.

Fan Delay Switch: The fan continues to operate after the thermostat shuts off in order to remove the residual heat left in the elements. Power must not be interrupted.

CFM: 385

Universal Mounting Bracket: Combination ceiling/wall bracket is included with every heater.

Unit Bearing Motor: Permanently lubricated, long life, unit bearing 4-Pole motor with 20 cc of oil. Enclosed rotor provides long-lasting, trouble-free operation. Thermally protected. 1300 RPM.

Electrically Held Smart Limit Protection: Heater shuts off when an over temperature condition exists and automatically resets when the normal operating temperature returns.

Standard Color: Onyx Gray

Tested: UL 2021

Approval: cCSAus

Dimensional Data

