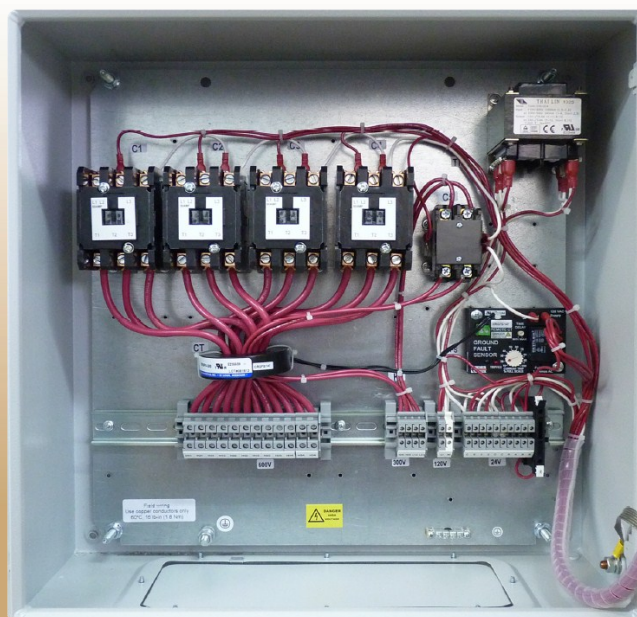


# PYROBOX3 *Power box with 4 contactors*

## FEATURES & BENEFITS

- Automatic control and power distribution for deicing and snow melting.
- Energy efficient algorithm.
- Integrated electronic controller with backlit LCD display.
- User friendly interface.
- Up to 3 zones activation.
- Sequencing option between the zones—Allowing larger snow melting area with less available power on site.
- Multiple snow sensor inputs—optional.
- Up to 30A & 300V outputs to heaters.
- Integrated adjustable Ground Fault Sensor.
- Adjustable Set points.
- Adjustable Upper and Lower Limit temperatures.
- Adjustable Hold/ON/OFF delay and manual ON.
- Adjustable splitting time between the zones.
- Technician testing / commissioning mode for easy and fast system test all year long (even during summer or at high temp.)
- ETL certification.



Part #	Item	UPC#	Description
PYROBOX3	Power Box 3	42329	Power box with 4 (300 VAC, 30 AMP)

# **PYROBOX3** *Power box with 4 contactors*

## **DESCRIPTION**

The outdoor temperature set-point, as well as ground the upper limit temperature and ambient lower limit temperature can be easily set.

The technician settings mode allows installer or technician to adjust the parameters for customized installations.

The PYROBOX5 is a “Plug and Play” controlled power distribution panel for frost protection, ice and snow melting applications.

When receiving a signal from the snow sensors, it activates the contactors energizing the heating elements.

Based on the DIP switches configuration, the zones are activated either continuously or in customized sequencing between the zones.

The Hold-on (Time delay) is adjustable in the range of 0 up to 99 hours.

The PYROBOX3 Built-in Ground Fault interruptor allows settings for the tripping current between 0.1—1.0 A.

The GFS adjustable time delay provides a simple and safe protection from nuisance tripping.

---

### ***The parameters that can be modified are as follow:***

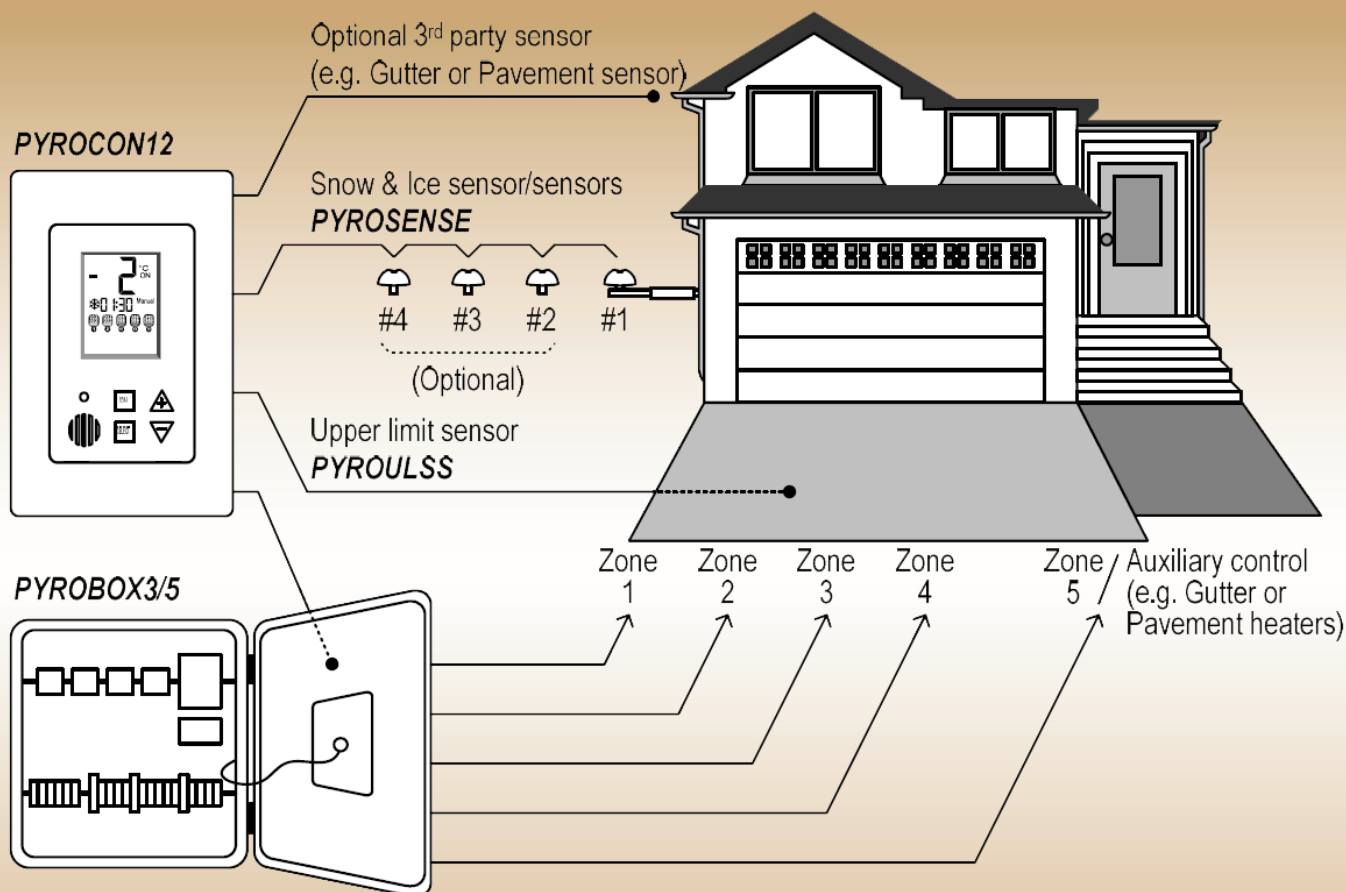
- Temperature set point.
- Lower ambient temperature limit.
- Slab upper temperature limit to deactivate heaters for energy efficiency.
- Time delay (Hold-on) before deactivating the heaters.
- ON time for manual mode.
- Heaters cycle time / spitting time between zones.
- Number of zones and sequence of operation (Sensors and heaters control logic).
- Snow sensor RH sensitivity.
- Number of snow sensors connected.

- 
- DIP switches located on the controllers provide easy access to technician mode and to the system configuration settings.
  - A 5th output (277 VAC, 30A Max Single Phase) can be used as a stand-alone ice melting zone or be activated simultaneously with zone #4. The Zone #5 offers a simple option for gutter, roof ice-melting or critical zone.
  - The PYROBOX3C allows snow sensor input both from the PYROSENSE sensors and also from a 3rd party snow sensor.
  - 3 terminals in the PYROBOX3 are available to connect a CIT-1, GIT-1 or SIT-6E sensors and use them to control some or all of the zones.
  - Installing the system is a quick and easy task. Apart of mounting the metal box to the wall, the installer needs only to connect the line in and line out wires in the marked terminals and the system is ready to work.

*For further information, operating and installation manual, please contact King Electrical Mfg. Co.*

# PYROBOX3 *Power box with 4 contactors*

## GENERAL SYSTEM LAYOUT



## TECHNICAL SPECIFICATIONS

Approvals	ETL Listed CAN/CSA-C22.3 No. 14 UL-508A	Manual Reset GFS	Push button on front panel
Enclosure Protection	IP20, Indoor mounting	Three Satellite Contactors	600 VACS, 50 A Max (Resistive), 50/60 Hz, 3-Poles
Dimension	18 x 18 x 18 inch (50 x 50 x 25 cm)	One Satellite Contactor	277 VAC, 30 A Max (Resistive), 50/60 Hz, 1-Pole 600 VAC / 50 A per pole
Ground Fault Equipment Protection	Adjustable trip current 0.1-1 A (default 0.2A)	Terminal blocks	6 mm <sup>2</sup> , 10 AWG (max)
GFS	Adjustable time delay 0.1-1 sec. (default 0.1 sec.)		

# PYROBOX3 *Power box with 4 contactors*

## WIRING DIAGRAM

