

# PYRO Snow Melt/De-Icing System

## PYRO Snow Melt/De-Icing System



**PYROBOX5**



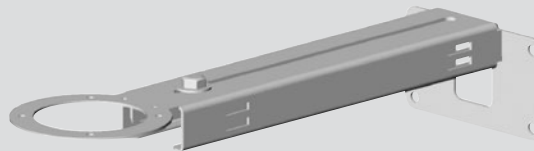
**PYROBOX3 & 3C**



**PYROULS**



**PYROSENSE**



**PYROSB**



**PYROCON12**

### PYRO De-Icing System

The unique staggering feature of the PYRO control melts snow & ice over larger areas, without the need to upgrade the power supply on site. Use a high demand heating system on a limited power supply source by controlling up to 5 different zones. The modular design allows customers to choose the right configuration for the specific property needs.

Enables use of high demand heating system on a limited power supply source. Modular: Up to 5 circuits/contactors. Up to 600V & 600A

Sequence of zoning 1/2/3/4/ + auxiliary (such as gutter sensor), Suitable for parallel, star & triangle connection. North American consideration operating algorithm.

- User friendly programming and adjusting
- Adjustable cycle time
- Adjustable delay (Hold on Time)
- Adjustable on and off
- Adjustable trip setting
- Non obtrusive adjustable snow sensor
- Integrated Fault Detector. GFCI non class A
- Logical setting for installer / set up & service
- Surface Upper limit adjustable Temperature Sensor
- Integrated option for Universal gutter de-icing sensor
- Programmable & precise snow and ice sensor
- Suitable for electrical & hydronic de-icing installations

MODEL	UPC	Item	Description
PYROBOX3	42329	Power Box 3	4 Zone Controller, 4-30A/2P Contactors, 1-Phase, 277V Max
PYROBOX3C	42328	Power Box 3C	2 Zone Controller, 2-50A/3P Contactors, 3-Phase, 600V Max +1 Zone Aux Controller, 1-30A/2P Contactor, 1-Phase, 277V Max
PYROBOX5	42327	Power Box 5	4 Zone Controller, 4-50A/3P Contactors, 3-Phase, 600V Max +1 Zone Aux Controller, 1-30A/2P Contactor, 1-Phase, 277V Max
PYROSENSE	42323	Snow sensor	Outdoor Snow Sensor
PYROULS	42325	Upper Limit Sensor	Upper Limit Temperature Sensor
PYROCON12	42322	Main Controller	Controller and User Interface panel
PYROSB	42326	Mounting Bracket	Wall mounting adjustable rust free holding bar
PYROSENSE 2/3/4	42324	Snow/Ice Sensor with Numerical Address	Option for Installations Where More Than One Snow Sensor Needed

PYROBOX units are complete with PYROCON12 controller and PYROULS. Order PYROSENSE and PYROSB separately.

\*\*Controls and thermostats should always be used with King heating systems.

# PYRO Snow Melt/De-Icing System

## PYRO Snow Melt/De-Icing System



**PYROBOX5**

**PYROBOX3 & 3C**

The PYROBOX3/3C/5 power boxes together with the PYROCON12 controller and interface panel, offer smart and easy control over the PYRO snow & ice melting system. It can operate up to 4 snow melting zones and one auxillary zone, with selectable sequencing method. Typical applications include driveways, sidewalks, loading docks, stairs, pavement and gutters. The back-lit LCD screen provides full interface and information of the system status. The use of several zones staggering allow covering larger area for snow melting with a limited available electrical power.

The PYROCON12 offers various operating and programming options such as:

- Switchable temperature scales (°F or °C)
- Both automatic and manual modes
- Adjustable heaters cycle and splitting times
- Adjustable heaters hold on, off & delay
- Optional auxiliary control by 3rd party snow sensor (e.g. Gutter sensor)
- Adjustable lower ambient temperature limit to stop heaters (lockout)
- Energy saving upper temperature limit
- Adjustable snow sensor sensitivity (%Rh)
- Commissioning/Test mode

### PYRO-X General System Layout With PYROBOX3/3C/5

