

Snow Melt



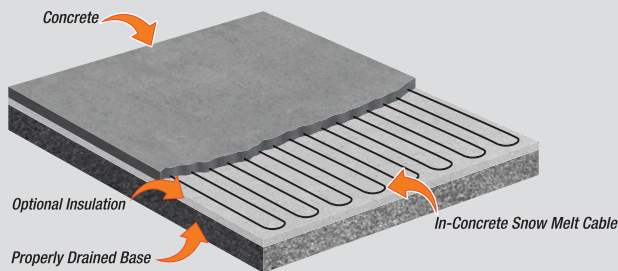
Snow Melt Systems

King's Snow Melt Systems are great solutions to stay ahead of the snow and ice when winter arrives. On-demand snow melt improves the safety of driveways, sidewalks, stairs and other foot-traffic areas, keeping them free from the dangers of ice. Keep your home or business safe and accessible all year long.

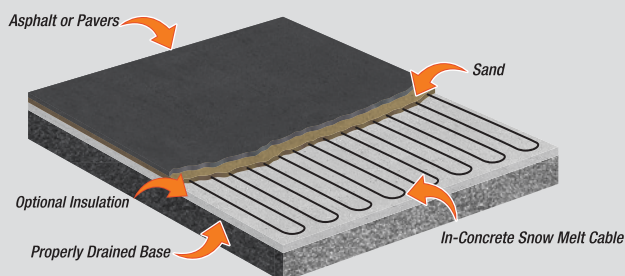
SC Series Cable offers a custom in-concrete layout solution to snow and ice build-up, and can be installed to fit any individual application. Cable can be spaced to allow between 37W/SqFt- 50W/SqFt (3" or 4" spacing) depending on the application. Heating concrete, asphalt or pavers with SC will keep your area free from snow build up and formation of ice.

SCM Series mats offer the easiest solution to snow and ice build up, providing pre-fabricated mats at 50W/SqFt (3" spacing) that can be rolled out prior to the concrete slab being poured. Whether you are heating concrete, asphalt or pavers the SCM will keep your area clear and safe to walk on.

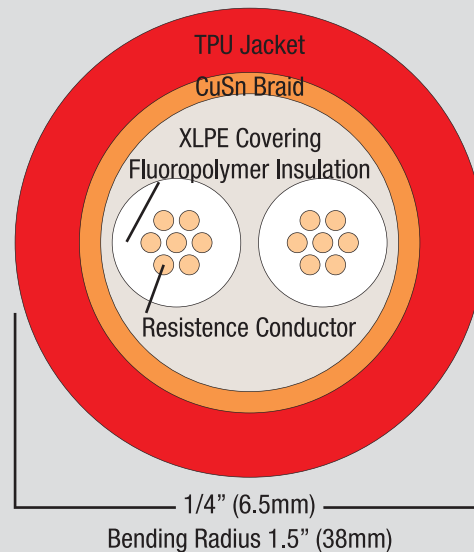
SC & SCM Concrete Installation



SC & SCM Asphalt/Paver Installation



SC & SCM Cable Construction



Snow Melt Cable



Model Code:

SC	24	12	245
A	B	C	D
A: Snow Melt Cable			
B: 24-240V			
C: Watts per Foot			
D: Linear Length in Feet			

SC Series Snow Melt Cable is designed for a variety of cold weather applications, melting snow and ice for improved safety conditions.

SC Snow Melt Cable Features

- For use in concrete, asphalt and under pavers
- For use in sidewalks, driveways, stairs, ramps, etc.
- 20 Ft. Cold Lead
- Twin conductor
- Emits zero EMFs (electromagnetic fields)
- Single point connection, 10 year warranty
- Tefzel® Insulation, TPU Jacket

240V

MODEL	UPC	VOLTS	CABLE LENGTH		(3" SPACING-50W/SQ.FT.) (4" SPACING-37W/SQ.FT.)		WATTS (12W/FT.)	AMPS
SC2412-40	42016	240	40 FT.	12.2 M	10 SQ. FT.	13 SQ. FT.	480	2.0
SC2412-60	42017	240	60 FT.	18.3 M	15 SQ. FT.	20 SQ. FT.	720	3.0
SC2412-80	42018	240	80 FT.	24.4 M	20 SQ. FT.	27 SQ. FT.	960	4.0
SC2412-100	42019	240	100 FT.	30.5 M	25 SQ. FT.	33 SQ. FT.	1200	5.0
SC2412-120	42020	240	120 FT.	36.6 M	30 SQ. FT.	40 SQ. FT.	1440	6.0
SC2412-145	42021	240	145 FT.	44.2 M	36 SQ. FT.	48 SQ. FT.	1740	7.3
SC2412-165	42022	240	165 FT.	50.3 M	41 SQ. FT.	55 SQ. FT.	1980	8.3
SC2412-185	42023	240	185 FT.	56.4 M	46 SQ. FT.	62 SQ. FT.	2220	9.3
SC2412-205	42024	240	205 FT.	62.5 M	51 SQ. FT.	68 SQ. FT.	2460	10.3
SC2412-245	42025	240	245 FT.	74.7 M	61 SQ. FT.	82 SQ. FT.	2940	12.3
SC2412-285	42026	240	285 FT.	86.9 M	71 SQ. FT.	95 SQ. FT.	3420	14.3
SC2412-370	42028	240	370 FT.	112.8 M	93 SQ. FT.	123 SQ. FT.	4440	18.5
SC2412-410	42029	240	410 FT.	125.0 M	103 SQ. FT.	137 SQ. FT.	4920	20.5
SC2412-475	42030	240	475 FT.	144.8 M	119 SQ. FT.	158 SQ. FT.	5700	23.8
SC2412-535	42031	240	535 FT.	163.1 M	134 SQ. FT.	178 SQ. FT.	6420	26.8

**Controls and thermostats should always be used with King heating systems.

ACCESSORIES

SCS1	25' Metal Cable Strapping for installation on existing concrete slab
SCS13	Snowmelt Cable Repair Kit

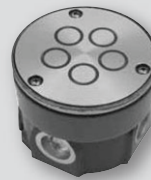
CONTROLS



DS-2C



DS-5C



SIT-6E



23832
Sensor Housing



SMNPLT

MODEL	UPC	DESCRIPTION
DS-2C	42331	DS Rain/Snow Controller 100-277V 30A, w/Built in Sensor
DS-5C	42332	DS Roof/Gutter Controller 120/240/277V 30A, w/Built in Sensor
SIT-6E	40505	Snow Melt Pavement Sensor (Requires 23832 Pavement Sensor Housing)
23832 Sensor Housing	40506	Snow Melt Pavement Sensor Housing (For SIT-6E HSC-4 HSC-5)
SMNPLT	40507	Snow Melt Brushed Stainless Steel Name Plate (per NEC 426.13 requirements)