

Installation, Operation and Maintenance Instructions

IMPORTANT: Save These Instructions!

DESCRIPTION

The SRK13 Roof Clip Kits are to be used with King SR and SRP heating cables. Carefully follow these instructions. Do not use other hardware or alternate mounting methods which may damage the heating cable and create an electrical hazard, risk of fire, or poor performance.

SRK13 ROOF CLIPS

The roof clips are used to secure King heating cables to shingle and metal seam roofs and gutters. They can be installed with nails and screws or with adhesive.

WARNING:

1. Roof Clips must be installed properly to ensure proper operation and to prevent the risk of electrical hazard or fire. Follow all design, installation, assembly, and test instructions carefully.
2. To minimize the danger of fire from electrical arcing if the heating cable is damaged or improperly installed ground fault equipment protection (GFEP) must be used on each heating cable branch circuit. Arcing may not be stopped by conventional circuit protection.
3. Do not use roof clips for installation on slate or tile roofs as damage may occur to the roofing materials. Consult roofing manufacturer for components approved for use on specific roofing materials.
4. Damaged heating cable can cause arcing or fire. Do not energize damaged heating cable. Repair or replace damaged heating cable prior to applying power.
5. While using pliers to close clamps on heating cable, heating cable should not be crushed or altered structurally in any way.
6. Do not twist cables during installation or embed in thermal insulation.

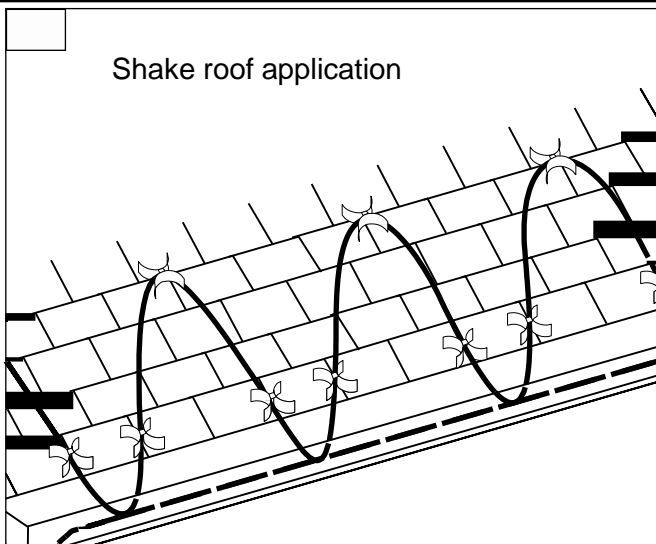
TOOLS REQUIRED: Hammer, Pliers, Caulking Gun

ADHESIVES and SRK14 VHB Pads: Refer to caulking manufacturers recommendations for the proper adhesive to use with the specific roofing materials requirements. Silicone based or Methacrylate adhesives are recommended for most metal roofs. King's SRK14 VHB Double Sided Acrylic Foam Pads are recommended for metal roofs ONLY.

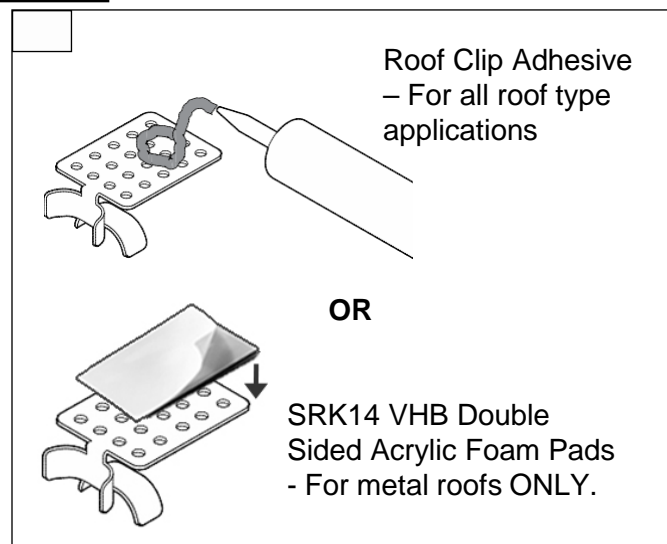
WARNING: ELECTRIC SHOCK HAZARD

Disconnect all power before installing or servicing the heating cable and accessories. SR heating cable must be grounded properly in accordance with the National Electrical Code (NEC). Failure to comply can result in personal injury or property damage. Only a qualified licensed electrical contractor shall install and service of SR heating cable and accessories, otherwise the warranty is voided.

Note:-All electrical wiring, including Ground Fault Circuit Interrupters (GFCI), must be done according to the NEC and local codes by a qualified installer. Article 426 of ANSI/NFPA 70 of National Electrical Code (NEC section 62 of CAN/CSA-C22.1, Canadian Electrical Code, Part I (CEC) governs the installation of this heat systems



Shingle roof application



Roof Clip Adhesive
– For all roof type applications

OR

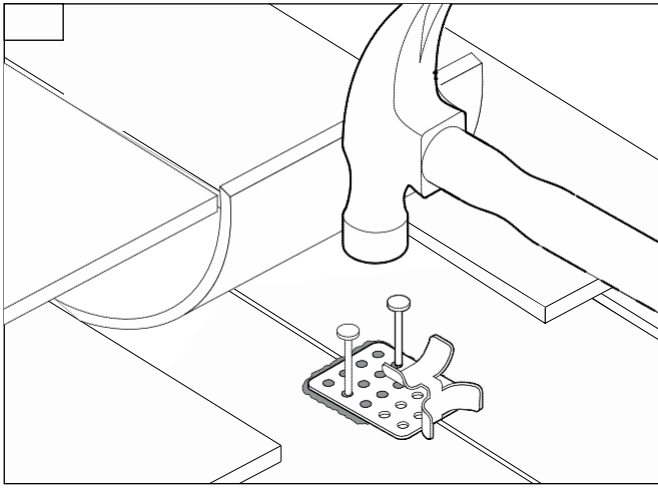
SRK14 VHB Double Sided Acrylic Foam Pads
- For metal roofs ONLY.

1

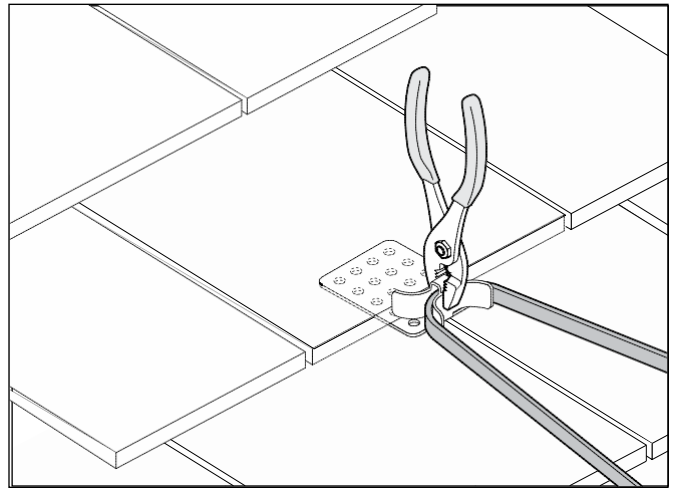
Determine the heating cable layout and clip placement. Refer the King deicing specification guide for assistance.

2

Apply the proper sealant for the roofing materials used to the back side of the roofing clip as shown. For metal roof it is recommended to use VHB Double Sided Acrylic Foam Pads

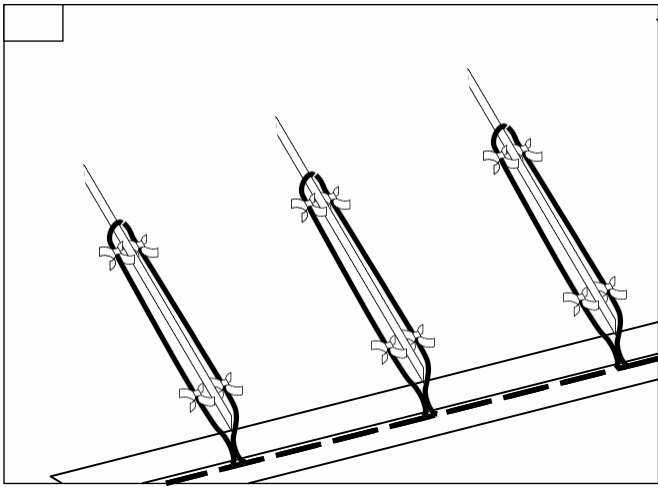


3 Place the under the shake as shown and fasten with nails or screws. Apply adhesive to the top of the clip before placing the shake back down.

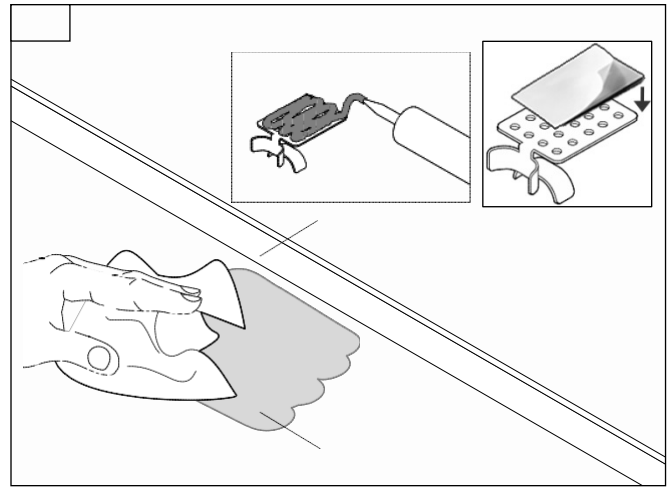


4 Install heating cable and use pliers to close the clamp. Do not crush the heating cable.

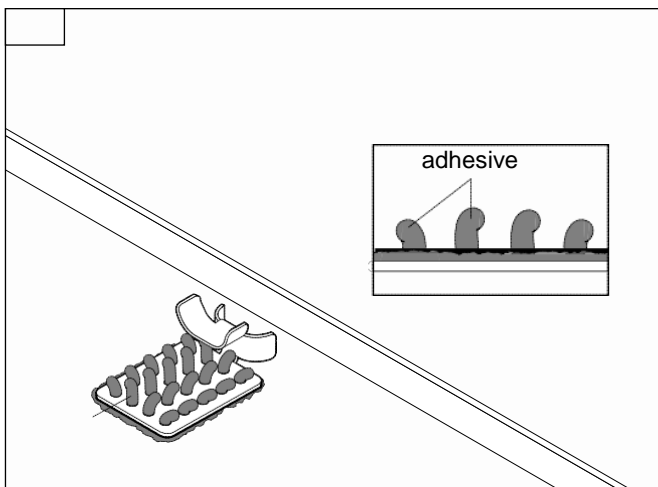
ROOF CLIP APPLICATION FOR METAL ROOF



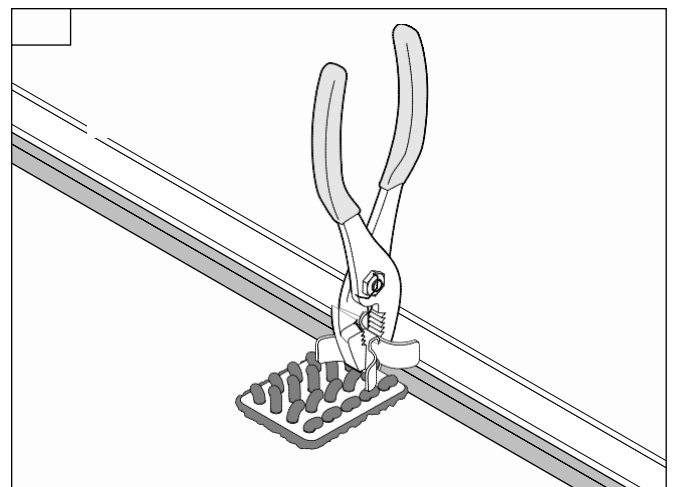
1 Determine the heating cable layout and clip placement. Refer the King deicing specification guide for assistance.



2 Clean and prepare roof surface per the adhesive manufacture's specifications. Then apply adhesive or VHB pad to the back of the roof clip.



3 Place clip on the prepared surface and press down until the adhesive flows through the holes. Do not trim back adhesive as the excess flow though helps hold the clip.



4 Allow adhesive to cure per manufacturer's specifications, then install heating cable. Do not crush the heating cable.